

HOROWHENUA STAR Ngā kōrero o Horowhenua

HOROWHENUASTAR.COM

FREE

ĀKUHATA/AUGUST 1, 2025

Call Adriana
for **optimum**
results!

Adriana Wilton
LEVIN'S EXPERT AGENT
029 776 6902
adriana@wiltonandco.nz

Wilton & Co
REALTY

ANDCO REALTY 8 LTD LICENSED REAA 2008



Russell Packer, who was head boy at Manawātū College, had a chance last week to reunite with former teachers, from left, Kirsty Tucker, David Allan, and Carolyn Allan. Photo Paul Williams

Russell's road to redemption

By Paul Williams

One of Foxton's favourite sons returned to his hometown last week to share his incredible story of struggle, success, fame, failure and, ultimately, redemption.

Russell Packer went well over time when he was speaking at Te Awahou Nieuwe Stroom at the invitation of The Horowhenua Company's BAS group, but it didn't matter because everyone was deeply invested in his talk.

Introduced by his former Manawātū College schoolmate, Irene Wakefield, he received a round of applause from a sold-out crowd for what was an open and honest insight into how he achieved his childhood dream of playing professional rugby league, and how he has faced down significant challenges, including spending a year in an Australian prison for assault.

Listening to his talk it became clear that Russell Packer is much more than his mistakes.

He's a loving husband and father, a philosopher, a university graduate, a businessman, and now a brave and captivating public speaker.

He didn't shy away from his shortcomings or owning his mistakes. Instead, he shared candid insights into the events that shaped his life and the strength it took to overcome them.

Growing up in Foxton, a strong competitive streak saw him give anything a go. He had a natural aptitude for rugby and league. When playing college rugby, curiosity saw him join a league training, catching the eye of former Kiwi international Dave Lomax, who was at the time the player-coach of the champion Levin Lions.

Not everyone supported his decision to play league, which only steeled his resolve to keep playing, something Russell has had described to him as "oppositional defiance disorder".

Before long he was playing schoolboy rugby on Saturday and senior club league on Sunday. Although just 15, at 6ft 2 (190cm) and 115kg, he could handle himself.

Things happened pretty quickly after that. In 2005 he made the NZ U16 team, debuted for Central Falcons in Bartercard Cup, and in 2006 he made the Junior Kiwis.

In 2007 when he was just 18 he got a call from Ivan Cleary to join the NZ Warriors, making his NRL debut a year later.

On the outside, the appearance of winning made everything seem amazing. But on the inside, Russell says he was a "ticking timebomb".

By 2013, things began unravelling. While he was poised to join Newcastle Knights in Sydney, he was arrested and charged with assault after an incident in November that left a man with fractured facial bones. On January 6, 2014, at just 24, he was sentenced to two years' prison.

"I didn't think I would be going to jail," he says.

He would serve more than a year of the sentence. To say it was tough on him and his young family is an understatement, and he will never forget the people who supported him through it.

And so began his incredible story of redemption, leading to him graduating from university with a degree in business management, resurrecting his league career with St George Illawarra Dragons, then West Tigers, and playing league for New Zealand again.

Russell, 35, is a proud family man, is well-read and well-educated, and helps derive understanding through philosophy. He draws on some of the great philosophers and often quotes them in his talks, but he's got some of his own that help to drive him.

"Adversity shaped me. Reconnection saved me. Purpose drives me," he says.

"We don't need to be perfect... comparison is the thief of joy."

He often looked towards a group of Manawātū College students who were listening to the talk.

"We just need to live with connection and courage with our kaupapa and our dreams, because when we turn these into actions we maximise our potential and create a new reality."

SHINE BRIGHT. STAY BOLD.

LOCK IN YOUR COLOR WITH L'ORÉAL VITAMINO COLOR



Say goodbye to dull, faded color and hello to hair that glows with salon-fresh brilliance.

L'Oréal Professionnel's Vitamino Color range is your secret to longer-lasting, radiant hair — infused with powerful Resveratrol, UV filters & anti-oxidants for unbeatable protection and shine.



WWW.LDHair.co.nz

(06) 368 8801 - 265B Oxford Street, LEVIN



Now Available in 500ml Bottles
& Eco-Friendly Refill Packs
Same professional quality.
Less plastic waste.

HOROWHENUA
STAR Ngā kōrero o Horowhenua

PIRI'ANGA ALOFA
pacific and community services

Five more arrests after Levin’s night of mayhem

Five more people have been arrested and charged in relation to the King’s Birthday weekend anti-social gathering in Levin that caused mayhem and saw police officers and members of the public injured.

The latest batch of arrests bring the total number of arrests relating to the incident to 27.

Manawātū acting area prevention manager Sergeant Bernard O’Brien says the latest arrests follow further review of footage filmed by officers on the ground and the police Eagle helicopter at the time, alongside reviewing CCTV and footage posted online on social media.

He says police have continued to work to identify and locate those who participated in this unlawful, antisocial road user gathering.

“The behaviour we saw that night was violent, reckless, and dangerous,” Bernard says.

“It is only down to luck that we aren’t dealing with more serious injuries, or even death as a result of this behaviour.”

He says police will continue to make enquiries into the events that unfolded that night and “knock on doors”. More charges are likely.

The five latest arrests faced a range of charges including unlawful assembly, assault with a weapon, intimidating a police officer, and sustained loss of traction.



Foxton captain Connor Paki lifts the Ramsbotham Cup.

Photo Paul Williams

Rare double for Foxton

By Paul Williams

Foxton Rugby Club has achieved a rare double in having senior teams win both the Ramsbotham Cup and Bill Muir Cup in the same season.

The double has been achieved just 15 times in the 132-year history of Horowhenua-Kāpiti rugby.

The club’s premier team beat Ōtaki’s Rāhui 58-26 at Levin Domain in brilliant winter sunshine on Saturday, while earlier in the day

the senior reserve team beat Rāhui 35-19 in the curtain raiser.

It’s the fourth time Foxton have done the double, having won both titles in 1940, 1947 and 1959.

Clubs to have won both titles are Hui Mai (1907, 1908), Wanderers (1919), Ōtaki (1934), Foxton (1940, 1947, 1959, 2025), Rāhui (1953, 1957), Athletic (1971, 1974), Paraparaumu (1972), Shannon (1991), and Toa (1999, 2003).

Before 1992, when semi-finals and finals were introduced, competition winners were decided by which team had the most points at the end of the season. On many occasion the trophies were shared.

The last shared title was in 2000, when Athletic and Wanderers finished with a 13-all draw. With the provision for extra time, extra-extra time, and golden point now in force, there will never be a shared trophy again.

■ *More on the finals page 17*



Free
CURTAIN MAKING
ON THOUSANDS
OF FABRICS*



15% off
SELECTED BLINDS,
SHUTTERS AND
MOTORISATION^

Plus, a free in-home measure and quote!#

Right now at Guthrie Bowron, get FREE curtain making* on thousands of fabrics, and 15% off selected blinds, shutters and motorisation^!

Orders must be in by 2nd September 2025, so pop in store and have a chat to our knowledgeable team about your window furnishings.

Inspiration starts here, at your local Guthrie Bowron.

GUTHRIEBOWRON 310 OXFORD ST LEVIN OPP KFC PH 063687133

*Applies to lined curtains only using selected fabrics over \$6999 per metre when width is under 150cm, or \$7999 and over per metre for wide width or continuous fabrics. Minimum drop of 160cm and maximum height of 250cm. Excludes Roman Blinds, Eyelet Curtains and componentry. Orders must be confirmed by 2nd September 2025 to be eligible for this offer. Not available in conjunction with any other offer. ^Selected styles and brands only. Please see in-store for details. Orders must be confirmed by 2nd September 2025 to be eligible for this offer. Not available in conjunction with any other offer.*Travel parameters may apply.



Guthrie Bowron

Inspiration starts here.

WHAT'S ON IN HOROWHENUA

AUGUST-SEPTEMBER 2025

● Levin Event ● Foxton Event ● Shannon Event ● Ōhau Event ● Manakau Event ● District Wide



Pop Up Eats Levin

Every Wednesday 5pm – 8pm
Te Takeretanga o Kura-hau-pō carpark



Quiz Night

Every Wednesday 7pm – 9pm
Te Takeretanga o Kura-hau-pō
\$5 entry



Creative Hands

Every Wednesday 10am – 1pm
Levin Senior Citizens Hall
\$2 Entry



Levin Senior Citizens Association

Every Third Thursday of the month 1.30pm – 3.30pm
Levin Citizens Hall
Membership fees apply



Friday Concerts

Every Friday 12pm – 1pm
Te Takeretanga o Kura-hau-pō



Levin Repair Cafe

Every Second Saturday of the month 10am – 1pm
Levin Senior Citizens Hall



Levin Monthly Market

First Saturday of the month 8.30am – 12pm
Uniting Communities Centre



Te Whare Mahana Monthly Market

Last Saturday of the month 8.30 – 12pm
Te Whare Mahana Community Centre,
32 Bristol Street, Levin



AquaTots Levin

Every Wednesday, 10.30 – 11.15am
Levin Aquatic Centre
\$2.50 child, caregiver free



AquaTots Foxton

Every Wednesday, 10.30 – 11.15am
Foxton Pools, 61-63 Main Street, Foxton
\$2.50 child, caregiver free



Sensory Sessions

Every Tuesday 7pm – 8pm and Saturday 9am – 10am
Levin Aquatics Centre
Regular pool entry



April Phillip's STiFF

Friday, Saturday & Sunday from 1-16 August
Levin Little Theatre, 75 Weraroa Road, Levin
Tickets trybooking.com/nz/events/landing/15761



Tea & Tales

Thursday 7 August, 10.30am – 11.30am
Te Takeretanga o Kura-hau-pō, 10 Bath Street, Levin



Yeehaw - Western themed Party

Saturday 9 August, 6.30pm – 12am
Tatum, 850 State Highway 1, Manakau
Tickets info@tatum.co.nz



\$1 Fitness Promo

Monday 11 August, all day
Levin Aquatic Centre, Corner Queen and Salisbury
Streets, Levin



Staying Safe Driving Course (Foxton Beach)

Wednesday 13 August, 10am – 2pm
Foxton Beach Community Centre, 108 Seabury Avenue,
Foxton Beach



Sisters in Country

Saturday 16 August, 7.30pm – 10pm
Levin RSA, 32 Bristol St, Levin



Zephyr Wills & The Hurricane Blues

Saturday 16 August, 7.30pm – 10.30pm
Firebird Café, 58 Oxford Street, Levin



Poetry and Pizza - Book Crawl

Friday 22 August, 6pm – 8pm
Firebird Café, 58 Oxford Street, Levin



Ice Skate Tour

27-31 August, times vary
Te Takeretanga o Kura-hau-pō, 10 Bath Street, Levin
Tickets eventfinda.co.nz/2025/ice-skate-tour/levin



Candlelit Concerts

Friday 29 August, 7.30pm – 8.45pm
Levin Uniting Church, 87 Oxford Street, Levin



Cocktails and Conversations a party for singles

Saturday 30 August, 7pm
Tatum, 850 State Highway 1, Manakau
Tickets info@tatum.co.nz

Event details are correct at the time of publication, but are subject to change.
Please contact event organisers for updates and registration details if required.

Advertise your event on Eventfinda.co.nz for it to appear on the HorowhenuaNZ website.

What's On will be published on the last Friday of each month.

To include your event in this list please email: comms@horowhenua.govt.nz.

For further details and other events, please visit horowhenuanz.co.nz/events

HOROWHENUA



Kiana Sayer-White with some of her male workmates at Waitārere Forest.

Photo supplied

Kiana revels in forestry

A young Levin woman not afraid of hard work and early morning starts is making a name for herself in the forestry industry.

Kiana Sayer-White, 19, received a forestry excellence award at the recent Southern North Island Wood Council forestry awards. She was also nominated for Emerging Talent of the Year at the awards.

Forestry might not be your typical career choice for young women – women make up only 18 percent of the forestry workforce – but Kiana says many young women are unaware of the range of opportunities in the sector.

The former Waiopahu College student started working for SMH Logging at the end of 2023 after finishing year 13, where she received the dux omnium studiorum trophy for all-round excellence.

She would get up at 3am before school to scale logs on the back of logging trucks at the McCartheys yard in Levin with her father, Aaron. Her older brother, Kasey, also works in the forestry industry near Taihape.

That work ethic has opened up a career pathway and ignited a passion for forestry. As well as her daily employment she is doing her papers and gaining the qualifications and skills she needs to run all the logging equipment.

Kiana has been working fulltime for SMH logging since the beginning of the year, starting on the job just three days after finishing her secondary schooling. She is currently part if a crew based in Waitārere Forest.



Ucol enrolment advisor Kevin Qin outside Te Whare Mahana.

Ucol courses at hub

Levin’s Community Hub, Te Whare Mahana, will soon be home to Ucol courses.

Ucol says it is expanding its presence in the area and wants to deliver education straight to learners, via marae, local classrooms and community spaces, high schools, workplaces and industries.

“Moving both our local office and some of our teaching into this space strengthens our connections with the community and creates new opportunities to better understand local education needs,” says Ucol’s operations lead, Jasmine Groves.

“Being alongside other community-focused organisations such as the Changemakers Resettlement Forum and Pasifika for Tomorrow, and with Muaūpoko Tribal Authority offices located just across the road, creates a real opportunity.”

The community hub is at the back entrance of the RSA, via the Bristol Street carpark. The first course offered from the new site will be a te reo Māori beginners and intermediate class, running on Wednesday evenings. Trades Academy Construction Level 2 and 3, Defence Pathways and New Zealand Certificate in Infrastructure Works are being offered at Ōtaki College.

At Horowhenua College’s Trades Academy space, Ucol is running Automotive Level 2. Earlier this year, Ucol and Horowhenua College also joined forces to help refugees learn English.

Foxton two seek new roles

John Girling says he is seeking a role at the Horizons Regional Council table after chairing Te Awahou Foxton Community Board for the past nine years. Meantime, board member Brett Russell wants to serve the Kere Kere Ward as a councillor. He is running for the ward seat vacated by Ross Brannigan, as well as a seat on the community board. Both men have put in their nominations for the October 11 local body elections.

HEALTH MAINTENANCE
HOLISTIC APPROACH
FEEL FRESH, NEW, ALIVE!

bodymind therapy
rhyss dwyer

relax
ZERO BALANCING
CRANIOSACRAL THERAPY
SOMATOEMOTIONAL RELEASE
heal
for body and mind

paxbodywork.co.nz
Now in Levin 2 days per week

027 244 5886

YOUR LOCAL ROOFING CONTRACTOR
Call for all your roofing solutions
FREE QUOTES
Moss kill
Repairs
Reroofs
Spouting
Chimney removal

Bruce 027 932 3754
bprobbie54@gmail.com

PROPERTY WASH
• Residential - Commercial - Industrial
• Soft wash
• Spider treatments
• Roof cleaning and treatments
• Gutter cleaning and clearing
• Driveways, paths and concrete patios
• Decks, fence and gazebos
• Fully insured
Locally owned and operated since 2021
Gold card discounts

Contact: 020 455 6007
e: purepltd@gmail.com • purepressure.co.nz

Sisters inCountry
Jodi Vaughan & Aly Cook
with special guest
Rosemarie Hack

LEVIN
RSA

Saturday August 16, 7.30pm
Tickets at eventfinder.co.nz
Ticket hotline 027 495 6425

Five already at Hamaria Rd hub

There's a lot going on the end of Hamaria Road in Levin.

The vital link road between Mako Mako Road and Hokio Beach is the site of an expanding business hub with more and more businesses setting up camp in the area.

Situated at 19 Hamaria Road are five different local businesses that are serving their community with a diverse range of products and services.

TPM Security Ltd, TPM Total Property Maintenance, K Signs Ltd, Ra'z Concreting Services, and Mower Master Ltd are all ideally located in a rapidly expanding industrial area close to town.

TPM Security Ltd is an industry registered Master Locksmith and can take care of all commercial and residential locksmith and security requirements: all keys, doors, windows, stays – even automotive push button start cars.

TPM Total Property Maintenance can take care of all those building, fencing, decking, clear-lite roofing, garden shed jobs – no job too small – and can also custom make and install trellises to suit any situation.

K Signs Ltd is an established sign-writing business that can brand or personalise anything, from vehicles and stationery, to business windows, facades and 21st birthday keys – using state-of-the-art technology and equipment.

Ra'z Concreting Services Ltd brings years of trade experience, and the ability to complete any concreting job big or small, industrial or residential - inside or out – to a high standard.

Mower Master Ltd assembles an impressive range of wood splitters and towable mulching mowers and topper mowers to suit both industry and lifestyle farmers, using Briggs and Stratton engines, selling online to customers all around New Zealand and the Pacific.

It seems like every time you drive down Hamaria Road, something new is happening!



The site of the expanding business hub at 19 Hamaria Road, where five businesses have already set up shop.

TPM Builders – TPM Total Property Maintenance Limited

Building work, Fencing, Decking,
Clearlite Roofing and Garden Sheds

NO JOB TOO SMALL!

Trellis custom made and installed!

Paint or unpainted trellis.

FREE QUOTES AVAILABLE



Landline: 06 368 9671

Email: office@tpmbuilders.co.nz



signs@k-signs.co.nz  021 574 467

TPM Security Limited

Commercial and Residential Locksmith

0800 876 539 (after hours available)

- Automotive lock issues and keys (including push button start cars)
- Commercial locksmithing specialising in Master Keying and restricted profile systems
- All residential locksmith work including rollers on sliding doors and window stays



19 Hamaria Road, Levin
office@tpmkeys.co.nz

SHOP HOURS
Monday - Friday 8am – 4.30pm




**RA'Z
CONCRETING
SERVICES**

231 Hokio Sands Road
Levin

027 787 2628

e: razconcretingservices@outlook.com

 [facebook.com/
racindyconnor/](https://facebook.com/racindyconnor/)

**ALL CONCRETE
SERVICES
AVAILABLE**

TOPPER/FINISHING MOWER

11.SHP. Genuine Briggs & Stratton.
Electric Start.

2 Years Factory Warranty.

Cuts right up to the fenceline.

2 year Parts & Labour Warranty.

Cutting width 1200mm.

Cutting height 22-300mm.



MOWER MASTERS LEVIN

028 461 5112

e: mowermasterltd@gmail.com

MOWER MASTER 50 TON DIESEL WOOD SPLITTER

499cc Diesel Motor
6 Inch Hyd Ram
Hydraulic and motor oil included

Wood Splitter with Table

\$4,174 +GST

Standard Splitter

\$3,652 +GST



Refuge grateful for Lions donation

By Paul Williams

Women with the courage to leave an abusive relationship often walk out the door scared and with nothing.

That’s why the Levin branch of Women’s Refuge is grateful for a donation it received last week full of items – toothpaste, toothbrushes, shampoo, soap, sanitary products and clothing – essential for those women in their time of need. There were even some knitted cuddly toys.

The donation came from the Foxton Te Awahou Lions Club.

Levin lead advocate Abigail Raika, who has been in the role for six years and a child advocate for 20 years, says incidents of family violence are increasing, not helped by a cost-of-living crisis and rise in the availability of methamphetamine.

“It’s really bad at the moment and it feels like it’s getting worse,” she says. “Here, we sometimes get the same amount of reports as Palmerston North. It’s no good sweeping it under the carpet. These are our babies suffering.”

They get calls every week from women needing support. Whenever there is a call, the

refuge has packs ready-made.

Abigail says there are many reasons why women don’t leave a relationship. They might not be in control of money, have no job, and no bank account.

“But we’re here to help with support and figure a way out of the abuse, help create a safety plan and help them set up a new life.”

Some women do return to the relationship. Abigail says it’s important to let these women know the refuge is there to support them while they are still in the relationship, and when they are ready to leave completely.

Foxton Te Awahou Lions club secretary Lynette Shanks says the club holds a monthly raffle and all profits go to supporting Womens Refuge. Their latest donation had goods worth \$1000.

Levin is a satellite office of Palmerston North Women’s Refuge, where the region’s safe house is located. The Levin region also covers Ōtaki, Foxton, Shannon and Tokomaru.



Levin Women’s Refuge lead advocate Abigail Raika, Te Awahou Lions Club secretary Lynette Shanks, and members Sandy Garwood and Liz Chuen. Photo Paul Williams

Foxton money mentors needed

Foxton’s Personal Money Coaches is looking for mentors and trustees.

“Mentors help people handle a budget,” says chairman John Girling. “FinCap provides full training for this and we hope most will be able to work one to three days a week. We raise money to help pay them.”

FinCap supports more than 700 financial mentors, provides baseline training, tools and resources for financial mentors to deliver professional services.

Trustees are the ones who help raise money and provide governance.

“We prefer to call ourselves personal money coaches, because we believe in helping, not telling people what to do,” John says.

■ *Personal Money Coaches, 10 Avenue Rd, Foxton. 06 363 6684, 027 623 8077, or info@peronalmoneycoaches.nz.*

Four get call for US baseball tournament

By Paul Williams

Four baseball players from Levin fly to the United States today to represent the New Zealand region at the Babe Ruth League World Series youth tournament.

Oscar Bland and Fletcher Warren are in the 16-and-under team and Kahu Paurini and Ryder Morris are in the 14-and-under. They join a touring party of 60 travelling to the US, with a 12-and-under team also going.

For many of the players it’s their first time overseas. In a two-week period they’ll play games in Dallas, Texas; Bronson, Missouri; and Hot Spring, Arkansas.

Levin Hustle Baseball president Hendrix Warren says the players have kept training through the winter in preparation.

“It will be a big challenge and a step up. We’re going to the home of baseball,” he says.

Hendrix is the founder of Baseball Pathways New Zealand Inc and says tours and tournaments provide valuable opportunities and experience for young talent.



Levin baseball players, from left, Oscar Bland, Kahu Paurini, Fletcher Warren and Ryder Morris, who will compete at the Babe Ruth Youth League Series.

Photo Paul Williams

The group has had support from volunteers and coaches to get them to the stage where they are ready to board a plane this morning and take on teams from South America, Great Britain, South Korea, Japan, Chinese/Taipei, Venezuela, and Australia.

“The volunteers and coaches and parents have all helped to make this a reality,” he says.

Other players from outside the region who also play for the Levin Hustle Club to make the travelling teams are Izak Miritana, Phoenix Tibbits, Lincoln Lambert and Lucas Foote.

Tree rededicated to remember crash

By Janine Baalbergen

Close to 100 people turned out for the rededication of a tree planted at Thompson House in memory of the six women who died in a bus crash in July 1965 at Rata.

The new tree is a crabapple, replacing a magnolia planted in 2015 that didn’t survive.

Mayor Bernie Wanden said at the ceremony on Sunday (pictured right) that at the time of the tragedy, lots of other things were happening. Levin’s population was increasing rapidly – from 4700 in the 1950s to 11,700 in the 1970s – and that same week New Zealand sent its first combat troops to Vietnam.

“Families and friends were deeply affected by the bus crash at Rata,” he said. “The Horowhenua Floral Art and Garden Club played a big role in the lives of many local women and offered social connections to its members and built solid friendships.”

Celebrant Jo Mason said it was a wet, cold day and in a time of no instant communications many families waited



several agonising hours for news. She said the town shut down for a while, in shock.

“No-one could have envisaged the tragedy the 28 members who boarded the bus would experience. Six members died and those who did return home were in shock and many had injuries.”

The six women who died were Sadie Day, 52, Valmai Farrell, 44, Marjorie Netten, 54, Francesca Romans, 53, Eunice Sorenson, 46, and Bessie Weggery, 48.

Lodge knitters keep kids warm

As the winter chill bites hard, the work of a local community group is warming hearts.

Horowhenua Freemasons Lodge has donated a huge amount of hand-made clothing to Taitoko School to distribute to students to help them keep warm this winter.

Freemasons group master Brian Evans says bags of slippers, fingerless gloves, scarves and beanies were knitted by wives and friends who also staged regular “knightathons” where they’d knit together.

Brian says the lodge is aware how tough times are economically for families and Taitoko School is just one school where students could benefit from the warm knitting.

It had been a community effort, as much of the wool used to knit the garments has been donated to the lodge, he says.

Sue McEwan, left, and Jean Roberts with bags of knitting at Taitoko School.



ON THE BEAT: SIMON CARTER

Family harm is never OK – our team is here to help

I would like to introduce to you the Horowhenua family harm team, of which I am currently the sergeant.

My name is Simon Carter and alongside me, is both senior constable Noeline Jopson and constable Zoe Bennett. We make up the team for the Horowhenua and Ōtaki areas.

As you may be aware, family violence or abuse can take on many different forms under the three main areas of physical, sexual or psychological harm. Examples include coercion/threats, isolation, emotional, economic, minimising



denying and blaming, sexual, intimidation, physical and use of children as types. Family violence can also come from anyone with whom you have a close personal relationship, even if you aren't residing together. In New Zealand this includes a partner, ex-partner, a family member, a support person or

even someone you live with.

The family harm team sit in the Prevention area and provide additional support to the public safety team who attend the 111 calls for service. Our goal is to help reduce the type, severity and frequency of family harm experienced to families within the Horowhenua and Ōtaki areas.

One of the greatest strengths is that we are part of a very passionate group of organisations, agencies and people who all strive to reduce family harm within our community, the drivers of it and support those within our community affected by it.

To help connect both people and

families with these organisations, the Horowhenua Abuse Liaison Team (Halt) through daily risk and safety planning meetings works alongside police and other core organisations to help connect the right organisations to those families needing assistance within the Horowhenua/Ōtaki areas and monitors its progress.

To help find these great organisations and agencies visit places like the library, Citizens Advice Bureau, community hubs or go online to get help. Halt.org.nz and other places may have booklets that assist.

You can try Are You Ok (areyouok.org.nz), Tautoko Tane (tautokotane.org.nz), NZ Family Violence Clearing House (nzfvc.org.nz) White ribbon (whiteribbon.org.nz) or Te Puna Aonui (tepunaaonui.org.nz).

The Horowhenua Family Harm Team are based at the Levin Police Station and can be best contacted between Monday to Friday between 8am and 4pm. If you need to speak with us directly concerning family harm matters, just come on in or visit your nearest police station.

Family violence is never OK and if it's an emergency, dial 111; if it's family harm related and you would like to have it reported, call 105 or go online.

PLAIN SPEAKING: IAN CARSON



A kaupapa built on aroha

The flags along the strip of highway through the whenua of Ngāti Tukorehe are now a permanent fixture.

They emerged to show local support for the hikoi to Parliament protesting the Treaty Principles Bill. They've stayed as symbols of Ngāti Tukorehe pride.

And at the weekend, they served another purpose – to draw attention to the speed limit past the marae gates that went up to 100km/h from 80km/h just a month ago.

Only 22 days later, there was a fatality on the highway. The thoughts of those people of Ngāti Tukorehe who heard the crash were “Oh no, not again”.

Their worst fears were realised as they attended to the injured, administered karakia to the deceased, and looked after the thousands of motorists stranded on the highway. Some of them walked up and down the highway distributing water to motorists and offering what information they had.

The marae was opened for people who needed toilets; children could use the playground.

And all the while, there was a lingering sense of grief at another life lost along the notorious stretch of highway that has claimed so many lives. For two years, after the speed limit came down to 80km/h, no fatalities were recorded.

For Ngāti Tukorehe, it means cars – and many big trucks – hurtle past their marae, a kohanga reo and their sacred urupā. Meanwhile, residents along this strip of road take their life in hands every time they leave their home.

So even more flags were flying for a couple of hours on a beautiful Sunday afternoon as locals and supporters from throughout the district attracted toots of support from passing vehicles and drew attention to a speed limit no one on this piece of highway wants.

As one of the speakers at the gathering said: “This kaupapa is built on aroha.”

That was certainly evident on that sunny afternoon.

■ Ian is managing editor of ID Media



KŌRERO MAI | A KUKU: DR HUHANNA SMITH

Technology helping to restore our lands

For the past three years I have been deeply involved with an incredible team of researchers who are tangata whenua kaitiaki/Te Taiao actionists/leaders; artist/environmentalists/ecologists, and landscape architects or spatial experts.



We have finally completed phase 1 to benefit key hapū of coastal lands that reach into the Kuku Ohāu estuary area and into the sea.

Tahamata Incorporation farmlands are immediately adjacent to this most sensitive and precious of coastal estuarine environs. The remarkable team of Me Whakaoreore Tātou: Mobilising Mapping Technologies for Benefit of Tahamata Incorporation has visualised via advanced GIS and photogrammetry what an environmentally healthy, well functioning and productive farm can be.

The culturally grounded land use plans are aimed at helping reduce GHG emissions, restore ecological diversity, and strengthen farm resilience against climate change extremes.

Using advanced technologies, the team has prioritised land use transition options that balance environmental, cultural and economic objectives. The project highlighted the critical nature of culturally led, nature-based solutions for wetlands, peatlands, saltmarshes, and for returning indigenous forestry (and exotic), among related regenerative farming practices.

While this phase of Me Whakaoreore Tātou is complete, we are yet to fully share the GIS maps and spatial renders that are all about protecting and enhancing this revered riverine, estuarine

and coastal ancestral landscape.

At Toirauwharangi College of Creative Arts in Wellington, a design team is compiling a publication that will be shared with Tahamata board and shareholders. The board has allowed us to keep the momentum going, and involve Te iwi o Ngāti Tukorehe Trust in plans. While we are finding funding for Phase 2, we all gave ourselves a week off from this massive collective effort.

I took off to an earthworkers week-long hui in Wellington, where I engaged with other like-minded people who “grow radical hope through food”. We were taught by key action-orientated experts who were deeply involved in repairing soil systems, the climate and diversity by understanding the relationship between photosynthesis and micro-organisms. The aim of this wananga was to train us to maximise carbon drawdown via diverse food production, and use the least amount of inputs for the greatest and most nutritious yield per square metre.

My heart and mind is full to bursting, and I'm now activating the learnings upon former Māori lands in Kuku that my partner and I bought in 2006. While I am currently engaged in organic food production (getting certified soon) and making fine olive oil under the Waikōkōpu Grove & Orchard brand, there is still much to do in terms of ensuring our gardens, orchards and grove soils are cared for via the best organic, permaculture or regenerative horticultural practices, so the local food produced and the care we take of our whenua enables our communities to thrive.

■ Huhana (Ngāti Tukorehe) lives at Kuku

CITIZENS ADVICE: GINNY WILLIAMS

Custody of children after separation

We often get asked about the rights that parents have in respect of the custody of children following a separation. In particular if one parent wishes to leave the district or country and wants to take the children with them.



Generally, both parents are guardians of their children, so both are responsible for the children's support, upbringing and day-to-day care. This will include decisions about things like where the children live and go to school, medical treatment and religious education (if any). If you separate, you and your spouse will need to try to agree on all of these.

Separating parents can make a parenting agreement

You can use the Ministry of Justice parenting plan workbook to help ensure that you cover the key issues in your discussion. If you are able to come to an agreement, it is a good idea to do it in writing; it's called a parenting agreement.

The agreement is not legally binding. If one of you has a concern with the other not following the parenting agreement, you can make an application to the Family Court to formalise it by turning the agreed terms into a court order (a parenting order).

Parents who disagree can get help to resolve their dispute

If you cannot agree on a parenting arrangement, you can get help by: (in this order):

- attending a Parenting Through Separation course
- going to mediation through Family Disputes Resolution and/or
- applying to the Family Court.

An Order Preventing Removal is a court

order that prevents anyone from taking the child out of New Zealand - including the parent who applied for the order.

If an Order Preventing Removal is in place, usually no-one can take the child overseas

If an Order Preventing Removal is in place, it is because the applicant (usually a parent) is worried someone (usually the other parent) intends to take the child overseas permanently.

When there is an Order Preventing Removal, no-one is allowed to take the child overseas. This includes the applicant, unless they asked in their application to be able to take the child out of the country.

If you need help to better understand your rights about the custody of children, or any other matter, please contact the Levin Citizens Advice Bureau on 06 368 9521, or call in and see us at the Uniting Church any weekday between 9.30am and 2pm.

■ Ginny is chair of Citizens Advice Bureau Levin

A look at the government’s economy claims

Amid the regular tales of insufficient this or that, be it a health service, educational provision, retirement home problems or simply the cost of living it can be helpful to look at what the government claims it has, and is, doing.

Government in this case is the National Party. It can be assumed that what it claims has, and is, going on in regard to the economy is in line with the beliefs of its coalition partners, Act and NZ First. Or at least that they will not quibble about them.

Prime Minister Chris Luxon talks up that the government has a plan. As stated by National it is: “Giving you more money in your back pocket with tax relief and other measures; stopping wasteful spending to reduce inflation and interest rates; and driving economic growth to create opportunity and lift wages.”

National says that the plan is working: “Inflation was as high as 7.3 percent under Labour and now it is down to 2.5 percent; the official cash rate (OCR) of the Reserve Bank is down from 5.5 percent to 3.5 percent; and that means a family with a \$500,000 mortgage could save \$300 a fortnight.”

National claims it is putting more money in your bank account through: “Tax relief worth up to \$102 every fortnight for your average household; Family Boost childcare payments of up to \$150 per fortnight to help parents; scrapping the Auckland fuel tax to save money at the pump; increased superannuation, giving couples an extra \$129.40 more every fortnight; and targeting the bills that matter – by encouraging another supermarket to come to New Zealand and going after energy companies”. It might in future add the banning

of the surcharge most often imposed on credit card transactions.

The claims of delivery can be challenged. For example, will the government as a shareholder direct that stockmarket-listed

companies in which it holds influential shareholdings reduce their prices, and as a result lower dividend payout? Does it really intend to directly interfere in the supermarket industry by breaking up the two-company ownership monopoly?

But the negativity that greets its claims of delivering economic growth arises often from real world doubt that the extra cash

it claims to have delivered to bank accounts does not compensate hundreds of thousands of families for the higher prices they encounter every day.

Can these efforts by the government actually bear fruit? Or are we stuck in an ever-increasing cycle of rising prices promoting less demand; further higher prices to compensate for less demand, and subsequent community anger?

Illustrative of that problem can be cafés and restaurants.

Demand falls off because normal patrons are cutting back their eating out to compensate for higher food, petrol, and electricity charges. Restaurant and café prices are raised to cover business costs against the loss of customers. Patronage falls further. The business is liquidated because income cannot match

... the negativity that greets [government] claims of delivering economic growth arises often from real world doubt that the extra cash it claims to have delivered to bank accounts does not compensate hundreds of thousands of families for the higher prices they encounter every day. Can these efforts by the government actually bear fruit? Or are we stuck in an ever-increasing cycle of rising prices promoting less demand; further higher prices to compensate for less demand, and subsequent community anger?

expenditure. This cycle is a trend impacting many small businesses. It is a significant factor in the loss of almost 28,000 jobs over the past two years.

Higher income taxes to pay for better health services will not change that equation. Nor will lifts in educational performance. An introduction of subsidies to some sections of the economy or price freezes, even if restricted, will not restore economic health.

The base economic problem is a legacy of the Covid shutdown. Political and economic evidence to date suggests the way out will continue to be a slow and debilitating grind for some years until there is a more favourable relationship between personal money in the bank and the cost of living. Alternatively, there could be sudden change sparked by New Zealand determining a rich vein of mineral or other wealth that will help better match national income to expenditure.

A third alternative is an abrupt and radical shake-out of existing orthodoxies. National’s Jim Bolger used a superannuation surcharge to get the country out of a financial hole when the Bank of New Zealand’s solvency was at issue. The coalition needs a policy more inspiring than

“grind it out” to better days. Labour supporters might find it hard to believe that taking more money from consumers by way of higher taxes will solve the conundrum of better patronage for small business.

A recent column canvassed the claimed decline of Parliament’s select committees as a place of serious work. Martin Gibbs of Hokio Sand Road has submitted to the *Horowhenua Star* an example of what he believes was inadequate scrutiny of the Insurance Contracts Amendment Bill of December last year.

He writes: “What they should be doing is making adequate, effective, and principled legislation to deliver justice. Principle holds true in all cases and like cases should be treated alike.”

Martin believes that provisions covering consequences for fraudulent selling and scamming should: “Ensure principle and justice, fraud and scam committed under the Insurance Contracts Law will be treated the same as fraud and scam under the criminal law.”

■ Bruce has been an economics and business editor, and a foreign correspondent in Washington, London and Hong Kong.



POLITICS

BRUCE KOHN

Considering a new website?

Discover the unique power of a Flightdec website to connect you up and give much better visibility. It'll transform your business or organisation.

Find out more at idmedia.co.nz



flightdec.com

HOROWHENUA

Community Connection

Issue 221 AUGUST 2025

Horowhenua
DISTRICT COUNCIL



Monique Davidson

Message from the CE

Kia ora Horowhenua,

Local councils have spent a lot of time in the news recently, with plenty of discussions in Central Government about how things should run. With some reforms and other changes in the pipeline, the way things are done in the future may look a little uncertain, but what I do know is we have a dedicated team here at Horowhenua District Council who will roll with the punches and continue doing all they can to serve this community.

Council spending has been a hot topic and nobody likes to hear rates are increasing. We understand that, but balancing the wants and needs of the community with affordability remains a challenge. We are doing our best to provide a good balance as we strive to do what we said we would in the Long Term and Annual plans. Increased costs, Central Government reforms, and affordability pressures facing our communities mean it is as important as ever that we look for efficiency and effectiveness in everything we do. I can assure you we take this seriously and will continue to do so. I encourage you to be curious, informed, and ask questions about the impact of the proposed changes on the future role and function of Local Government.

One myth we are working on busting is that Council debt is a bad thing. We're responsible for building some big-ticket items – think water treatment plants, roads, and facilities. These are essential but don't come cheap and just like most people wouldn't buy a house with cash, we don't pay up front for assets that will serve our community for many decades.

For example: Say we must build an important piece of infrastructure that will cost hundreds of millions of dollars. Rather than pay with rates and other Council income, which would be unaffordable and unsustainable, we use debt to pay for it. This means ratepayers share the cost equally over the asset's lifetime.

Having no debt at all would mean astronomical rates increases, and we know that's not what our community wants. We are acutely aware of the impact that rates increases have on our residents, particularly those on low and fixed incomes. Borrowing allows us to balance rates affordability while still delivering the infrastructure the community needs.

In other news, candidate nominations for this year's Local Government Election close at midday today (1 August) and I'm looking forward to learning more about the brave people who have put their hands up. My challenge to you is to not stand idly by and let others decide your future when it comes time to vote. Do what you can to learn about the candidates, discover who best represents your values, and have your say in September/October.

This week also marks a couple of important opportunities in the community development space. Nominations for the 2025 Civic and Youth Excellence Awards opened on Monday – a great opportunity to celebrate our local heroes – and today you can start applying for Community Grants and Funding. Head to our website to find out more.

Ngā mihi,

Monique Davidson

Monique Davidson
Chief Executive

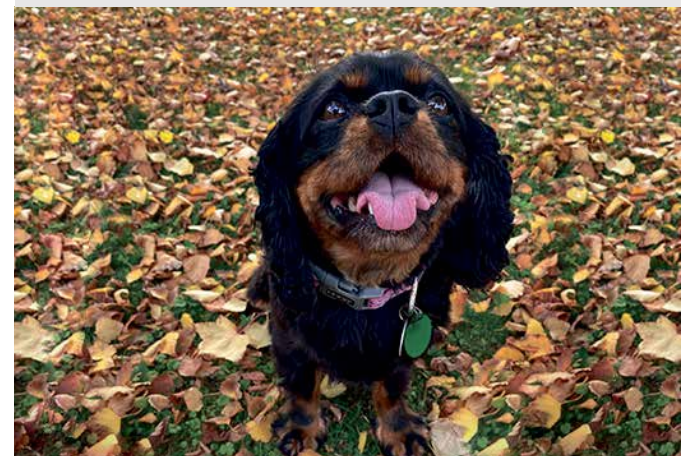
Council Meetings

Risk & Assurance Committee Meeting
Wednesday 6 August 2025, 10am to 12pm
Council Chambers, Horowhenua District Council, 126 Oxford Street, Levin

Council Meeting
Wednesday 6 August 2025, 1pm
Council Chambers, 126 Oxford Street, Levin

Community Wellbeing Committee Meeting
Wednesday 13 August 2025, 10am to 12pm
Council Chambers, Horowhenua District Council, 126 Oxford Street, Levin

Meeting dates and times are subject to change. Please refer to horowhenua.govt.nz/Council/Council-Meetings for the full meeting schedule, minutes and agendas.



Water meters save half billion litres

Smart water meters have saved an average of 46 litres of treated drinking water per person on our town supplies every day this year. That's more than half a billion litres – or 206 Olympic swimming pools!

How does it work? The meters identify leaks on people's properties. We let the owners know so they can fix the leaks. By doing so, they're avoiding potentially expensive damage to their property, as well as extra cost if the leak causes them to use more water than they've already paid for in their rates.

To make it easier for people there is an amnesty period if a leak is found on your property and has caused you to use more than your water allocation. You can apply within three months of your water meter being installed for 100% remission on your excess water usage bill if it's caused by a leak, upon proof of repair.

Outside of this three-month amnesty, you can apply for up to 50% remission on the excess usage charges incurred because of the leak upon proof of repair.

Smart meter installation is coming along well – we've finished in Shannon, Foxton and most

of Levin, and we're working our way through Foxton Beach and Tokomaru.

And at Council we're doing our bit by repairing and replacing water pipes to keep everything flowing and prepare us for the future.



No bones about it, dog registrations are now overdue

Dog registration renewal notices hit letterboxes and inboxes in early July and payment is now overdue, which means a 50% penalty fee.

More than 3500 Dogs have been registered in the district so far. If you've already renewed, just display your new red registration tag on your pet once it arrives and you're all set!

We understand times are tough, especially with the rising cost of living, so we truly appreciate those of you who have already paid.

Registration helps us quickly and easily reunite lost dogs with their owners. When a registered dog is found, we can access the owner's contact information and ensure a swift and safe return home, reducing the stress for both the pet and the owner. Your registration fee helps fund this important service.

The registration fee also supports community safety and dog education programmes.

All dogs over three months of age need to be registered for the 2025/26 year as soon as they reach this age.

COMMUNITY AT HEART

GRANTS & FUNDING

Opens 1 August 2025
horowhenua.govt.nz/grants

Download free app Antenno to report issues, as well as receive alerts and notifications.

www.horowhenua.govt.nz/Antenno

NOMINATE A LOCAL
LEGEND FOR THE
CIVIC AND YOUTH
EXCELLENCE AWARDS

HOROWHENUA
CIVIC & YOUTH
AWARDS CEREMONY

Celebrating Community Champions

Do you know a local legend or rising star who helps make the district a better place? Nominations are now open for Horowhenua District Council's Civic and Youth Excellence Awards. They don't have to be caped crusaders, just everyday heroes who love their community.

Civic and Youth Excellence Awards honour people who give their time, energy and heart to our communities – from long-serving volunteers and unsung community heroes, to inspiring rangatahi leading the way in sport, the arts, academia and community service.

The awards support the aims of Horowhenua District Council's Community Wellbeing Strategy by helping to strengthen community pride, connection and belonging. By recognising the achievements of our people, we help create a district where everyone feels seen, valued and supported.

How to Nominate

These awards are for the everyday legends – the people who quietly go about making life better for others.

Anyone can nominate. Whether you're a teacher, coach, committee member or neighbour – if you know someone who deserves recognition, we'd love to hear from you.

Don't wait or assume someone else will do it – this is your chance to say thank you and give them the recognition they deserve.

Nomination forms and full criteria are available online at:

horowhenua.govt.nz/CivicAwards

horowhenua.govt.nz/YouthExcellence

If you need help with your nomination, call 06 366 0999 or email community@horowhenua.govt.nz

Christmas

20 25

Horowhenua Christmas Parade & Carnival

DEC 6

Saturday 6 December 2025

MORE INFORMATION SOON

FITNESS
PROMO

Come and try any fitness class for \$1

AUG 11

Levin Aquatic Centre

Foxton Pools

For more information please contact the Levin Aquatic Centre

06 368 0070

aquatics.horowhenua.govt.nz

AquaticsHorowhenua

[horowhenua_aquatics_fitness](https://www.instagram.com/horowhenua_aquatics_fitness)

Every Wednesday 5-8pm
Te Takeretanga o Kura-hau-pō car park

events@horowhenua.govt.nz

Pop Up Eats Horowhenua

enquiries@horowhenua.govt.nz

www.horowhenua.govt.nz

HorowhenuaDC

06 366 0999

Private Bag 4002, Levin 5540

126 Oxford St, Levin 5510

Customer service hours: Monday - Friday 9am to 5pm and Wednesdays 9.30am to 5pm.

» 190 Tiro Tiro Road **LEVIN**

ASKING \$450,000



MODERN, LIGHT FILLED, AND MOVE IN READY

Step into this beautifully modernised 1970s gem, where timeless architecture meets contemporary style. Fully refreshed throughout, this two bedroom home showcases a modern colour palette and quality finishes that enhance its warm, welcoming feel. Sunlight floods the open plan kitchen, dining, and living area through expansive west facing windows, while doors open effortlessly to a spectacular deck, your perfect spot for entertaining or relaxing at the end of the day. Stay comfortable year - round with a heat pump, and enjoy the convenience of an internal access single garage. The bathroom is stylish and practical, featuring a shower and vanity.

Ref : www.wiltonandco.nz/WILO1938

OPEN HOME SUNDAY 1.30PM-2PM

Adriana Wilton
0297766902
adriana@wiltonandco.nz



» 11 Duke Street **LEVIN**

BEO \$650,000



MODERN COMFORT MEETS VERSATILE LIVING!

If you've been searching for a home that offers room to spread out, entertain in style, or comfortably accommodate extended family - this one's for you! This well presented property ticks all the boxes with a modern kitchen, open-plan living, and an updated bathroom that brings everyday comfort to the forefront. What truly sets this home apart is the separate wing - complete with its own bedroom, bathroom, and living area, ideal for teenagers, guests, or multigenerational living. With private access to the rear yard, it's a haven of independence and ease. Step outside and get ready to entertain! The dedicated bar area and outdoor space are perfect for summer BBQs.

Ref : www.wiltonandco.nz/WILO1911

OPEN HOME SUNDAY 12.30PM-1PM

Adriana Wilton
0297766902
adriana@wiltonandco.nz



» 112A Winchester Street **LEVIN**

BY NEGOTIATION



LOCATION PERFECT

If convenience is high on your list, this well presented brick and aluminium home offers the perfect blend of comfort, privacy, and location. Just a short stroll to town, the supermarket, and local amenities, this is easy-care living at its best. With a generous 130m2 floor area, there's plenty of space to spread out. The modernised kitchen is a real highlight for home cooks, featuring a wall oven, hob, dishwasher, and a view of the Tararua Ranges. It flows effortlessly to the dining area and sunny conservatory, which opens out to the rear garden - ideal for enjoying morning coffee or entertaining guests. The light filled lounge features a large glass slider

Ref : www.wiltonandco.nz/WILO1894

OPEN HOME SUNDAY 12.30PM-1PM

Adriana Wilton
0297766902
adriana@wiltonandco.nz



» 30A Perth Street **LEVIN**

ASKING \$409,000



TIDY, AFFORDABLE & TUCKED AWAY

Tucked away on a rear section this three bedroom home is a gem! The kitchen and dining area flows seamlessly to the lounge area which opens through a ranchslider to a private rear yard with a single garage. With excellent flooring throughout, this home is super tidy. The bathroom boasts a shower over bath and there is a separate toilet and laundry room. There are two double bedrooms and a smaller third. Situated close by is a park for children to play, and schools are just a short walk away.

Ref : www.wiltonandco.nz/WILO1873

OPEN HOME SUNDAY 11.45AM-12.15PM

Adriana Wilton
0297766902
adriana@wiltonandco.nz



» 26 George Street **LEVIN**

BY NEGOTIATION



THE COMPLETE PACKAGE

This beautifully renovated home sits proudly on a generous 880m2 section and effortlessly blends timeless charm with contemporary upgrades. Thoughtfully transformed throughout, it retains the warmth of native timber while embracing modern standards of comfort and efficiency. Nearly every aspect of the home has been updated - re-gibbed walls, new insulation in the walls, ceiling, and underfloor, plus upgraded electrical wiring, plumbing, and stylish new light fittings and a near new roof. A heat pump ensures year-round comfort. Three generously sized bedrooms, a sleek new bathroom complete with a luxurious soaker bath, and a modern kitchen designed for everyday living.

Ref : www.wiltonandco.nz/WILO1910

OPEN HOME SUNDAY 12.45PM-1.15PM

Adriana Wilton
0297766902
adriana@wiltonandco.nz



» 39 Winchester Street **LEVIN**

ASKING \$529,000



FANTASTIC FIRST HOME, EXCELLENT GARAGING

If you're searching for the perfect first step onto the property ladder, this well-presented three-bedroom home is a standout! Set on a 726m2 corner section with dual access, it offers space and sunshine. Inside, the open plan kitchen, dining, and lounge area creates a welcoming hub and flows out to a covered deck - ideal for entertaining or enjoying a quiet morning coffee. The kitchen has been freshened with new cupboard doors, there is a pantry and stove with gas hobs. New carpet throughout gives the home a fresh and inviting feel and a heat pump ensures year-round comfort. The main bedroom opens out to a deck.

Ref : www.wiltonandco.nz/WILO1912

OPEN HOME SUNDAY 1.45PM-2.15PM

Adriana Wilton **David Campbell**
0297766902 0224127700
adriana@wiltonandco.nz david@wiltonandco.nz



» 14 Twin Peaks Grove **KOPUTAROA**

BEO \$1,059,000



IGNORE THE RV OF \$1,390,000

Our Motivated Vendor Says SELL! An extraordinary 26% under RV - that's serious value you can't afford to miss. This is your golden opportunity to secure a truly unique lifestyle property at an unbeatable price. The vendor is ready to meet the market - act now before someone else snaps it up! Car enthusiasts will be in awe of the triple-bay garage, complete with a lockup workshop, three-phase power, and attic storage - the ultimate setup for tools, hobbies, and serious projects. At the heart of the home is a spacious open-plan living area.

Ref : www.wiltonandco.nz/WILO1857

OPEN HOME SUNDAY 12PM-12.30PM

Adriana Wilton
0297766902
adriana@wiltonandco.nz



» 42 Ballance Street **SHANNON**

BEO \$450,000



CHARMING 1915 CHARACTER HOME

Step through the white picket fence and be transported to a bygone era. This beautifully restored 1915 colonial style home captures the essence of timeless charm while offering modern comfort and convenience. From the moment you arrive, you'll be captivated by its classic character- leadlight windows, natural timber floors, and a welcoming colonial aesthetic. The heart of the home is the well appointed kitchen, complete with modern appliances and stylish finishes. Large timber double doors connect the kitchen to the lounge, allowing for open plan living or private separation as needed. Both bedrooms are generously sized doubles.

Ref : www.wiltonandco.nz/WILO1916

VIEW BY APPOINTMENT ONLY

Haley Sturt
02102387699
haley@wiltonandco.nz



» 47 Highbury Drive **LEVIN**

BEO \$1,090,000



TIMELESS ELEGANCE

From the moment you arrive, you'll sense the distinction of this remarkable five bedroom home. Nestled behind a private brick fence, the welcoming entrance leads through grand double doors into a beautifully light-filled interior. At the heart of the home, the designer kitchen is a dream for any chef, boasting premium finishes, a six-burner gas stove, and a walk-in pantry. Thoughtfully designed for seamless living, it flows effortlessly into both the formal dining room and the outdoor patio. Set on a private 1,412m2 section, the beautifully landscaped grounds create a serene sanctuary.

Ref : www.wiltonandco.nz/WILO1842
OPEN HOME SUNDAY 11.15AM-11.45AM

Adriana Wilton
0297766902
adriana@wiltonandco.nz

» 224B Cambridge Street **LEVIN**

ASKING \$485,000



FOR THE CREATIVE MINDS

Tucked away in a quiet, private position, this delightfully different home is brimming with charm and personality, the perfect sanctuary for an artist, writer, or anyone who appreciates unique design. Step inside and be inspired by the soaring high ceilings, incredible natural light, and generous living spaces that invite creativity and calm. A whimsical, storybook-style staircase adds a touch of magic, leading to two bedrooms with one opening to a balcony - the ideal spot for morning coffee, quiet reflection, or capturing a moment on canvas. New carpet brings a fresh and cosy feel, while the warmth of a logburner makes this a true haven in the cooler months.

Ref : www.wiltonandco.nz/WILO1835
OPEN HOME SUNDAY 12PM-12.30PM

Adriana Wilton
0297766902
adriana@wiltonandco.nz

» 57 Weraroa Road **LEVIN**

BY NEGOTIATION



READY AND WAITING!

Whether you're downsizing, investing, or stepping onto the property ladder, this tidy brick unit is an ideal choice. Perfectly positioned just a short walk to town, this two bedroom home offers comfort, convenience, and low-maintenance living. Freshly updated with new carpet, curtains, and a modern paint palette, the home feels light, bright, and welcoming. The kitchen has been partially modernised, featuring a brand new stove and fresh flooring. A heat pump ensures year-round comfort, while the smart layout maximises space.

Ref : www.wiltonandco.nz/WILO1903
OPEN HOME SUNDAY 1.15PM-1.45PM

Lynaire Cottle
0272224017
lynairc@wiltonandco.nz

» 197A Tiro Tiro Road **LEVIN**

ASKING \$599,000



ENDLESS POSSIBILITIES ON 1884M2

Welcome to 197a Tiro Tiro Road - an exciting and unusual proposition. Sitting proudly on a generous 1884m2 section, this spacious 154m2 home has been utilised for commercial purposes for almost 20 years. With residential zoning still in place, the opportunity is wide open, continue as a commercial venture (consent required), reimagine as a unique residential home, or create a work-from-home setup with serious space. Inside, the layout offers flexibility with two bedrooms and expansive living areas.

Ref : www.wiltonandco.nz/WILO1885
OPEN HOME SUNDAY 1PM-1.30PM

Adriana Wilton
0297766902
adriana@wiltonandco.nz

» 670 Queen Street East **LEVIN**

BEO \$495,000



IT'S ALL DONE - JUST MOVE IN

This delightful two bedroom home is a beautiful blend of timeless Art Deco character and contemporary style. From the moment you arrive, the inviting sunroom sets the tone, a light-filled space perfect for watching the world go by. A thoughtfully updated interior is sure to please. The spacious, modern kitchen opens out to a rear deck and fully fenced backyard, perfect for entertaining. The lounge is a standout feature, with a striking curved window that adds an enchanting touch of Deco elegance and fills the space with natural light. Comfort is front and centre with quality flooring throughout, a heat pump, DVS system, and insulation.

Ref : www.wiltonandco.nz/WILO1922
OPEN HOME SUNDAY 12PM-12.30PM

Adriana Wilton
0297766902
adriana@wiltonandco.nz

» 76 Parker Avenue **LEVIN**

BY NEGOTIATION



DOUBLE THE OPPORTUNITY - BUY ONE OR BUY

This property includes a spacious four bedroom home set on a 587m2 section. The home offers generous living with four bedrooms, open-plan living spaces and a good double garage. Well presented and fenced, it's ideal for those looking for their home, investment, or future development. (181 Bath Street) a 331m2 section complete with a shed, is also available. Purchase together or separately.

Ref : www.wiltonandco.nz/WILO1919
OPEN HOME SUNDAY 11.45AM-12.15PM

Adriana Wilton
0297766902
adriana@wiltonandco.nz

» 35 Elizabeth Street **LEVIN**

BEO \$679,000



FANTASTIC TOWNHOUSE PLUS MORE

A low-maintenance brick townhouse featuring three bedrooms and modern comforts throughout with a stylish open plan kitchen, dining, living area. Double glazing, HRV system, heat pump and infinity gas hot water provide for comfortable living. Tucked privately at the rear with its own access is a flat. Offering unmatched versatility for extended families, investors, or those seeking the ideal work from home setup. Live in one, rent the other, or explore the income potential of Airbnb. This property provides options!

Ref : www.wiltonandco.nz/WILO1905
OPEN HOME SUNDAY 1.15PM-1.45PM

Adriana Wilton **David Campbell**
0297766902 0224127700
adriana@wiltonandco.nz david@wiltonandco.nz

» 2 Argyle Avenue **LEVIN**

ASKING \$550,000



FOUR BEDROOMS WITH SPACE

Set on a generous 811m2 corner section, this elevated 210m2 weatherboard home offers an exciting opportunity for families needing room to grow or savvy investors looking to add value. Four bedrooms, two bathrooms (including an ensuite), and generous living and dining spaces are perfect for family life. The kitchen enjoys stunning views of the Taranaki Ranges and opens out to a deck, ideal for entertaining while overlooking the backyard. A separate rumpus room adds extra flexibility for a playroom, home office, or second lounge. Comfort is assured year round with two heat pumps and HRV ventilation.

Ref : www.wiltonandco.nz/WILO1915
OPEN HOME SUNDAY 12.45PM-1.15PM

Ryan Watson
0223554790
ryan@wiltonandco.nz

Your success is our success.

TREMAINS®

This is your sign to join us and
find out how you can bring
people and property together.

Join us at our careers evening.
7th August 2025,
doors open at 5:15pm.

Tremains Levin office
187 Oxford Street, Levin

Secure your seat and RSVP to
recruitment@tremains.co.nz

Tremain Real Estate Levin Ltd Licensed Real Estate Agent REAA 2008

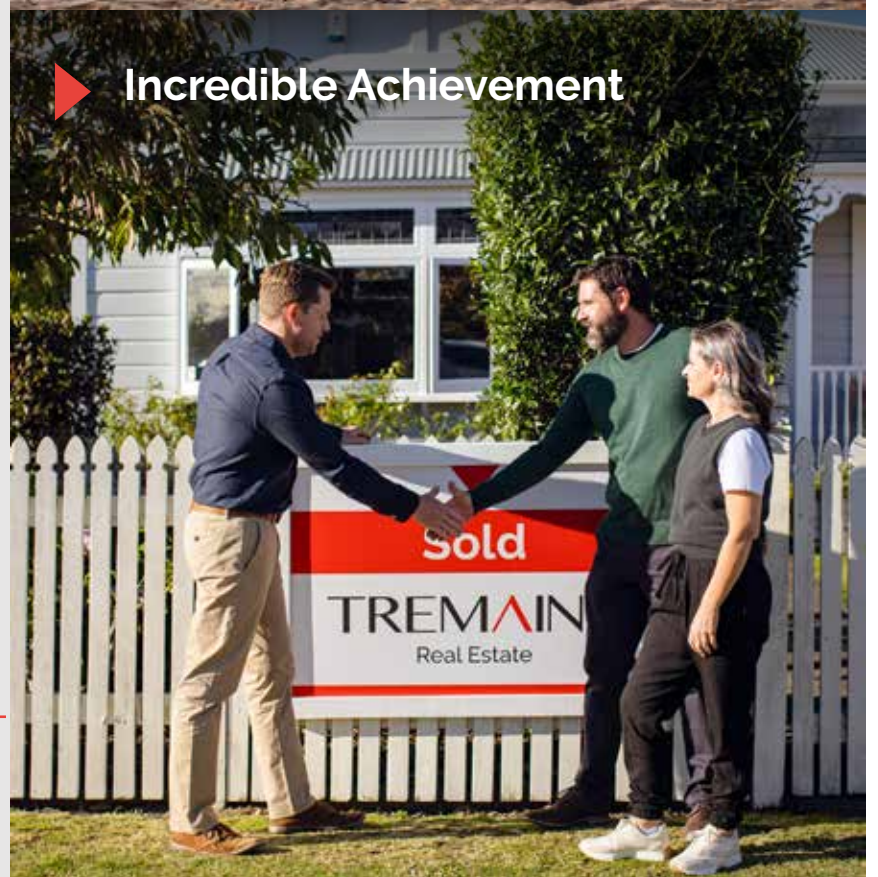
► Uncapped Earnings



► Flexible Lifestyle



► Incredible Achievement



Thinking About Your Next Move?

Take advantage of a free property appraisal with no strings attached. I'm offering complimentary, no-obligation appraisals to help you explore your options, no pressure, just honest advice. Backed by 25 years of real estate experience and in-depth knowledge of Levin, Ōhau, Shannon and the surrounding areas, I provide insight into current market trends and recent sales. Whether you're selling a residential, lifestyle or rural property, I'm here to help. Let's chat.

**Sell with confidence,
Sell with Jan Sparrow.**

Jan Sparrow

027 243 3506

jan.sparrow@tremains.co.nz

TREMAINS®

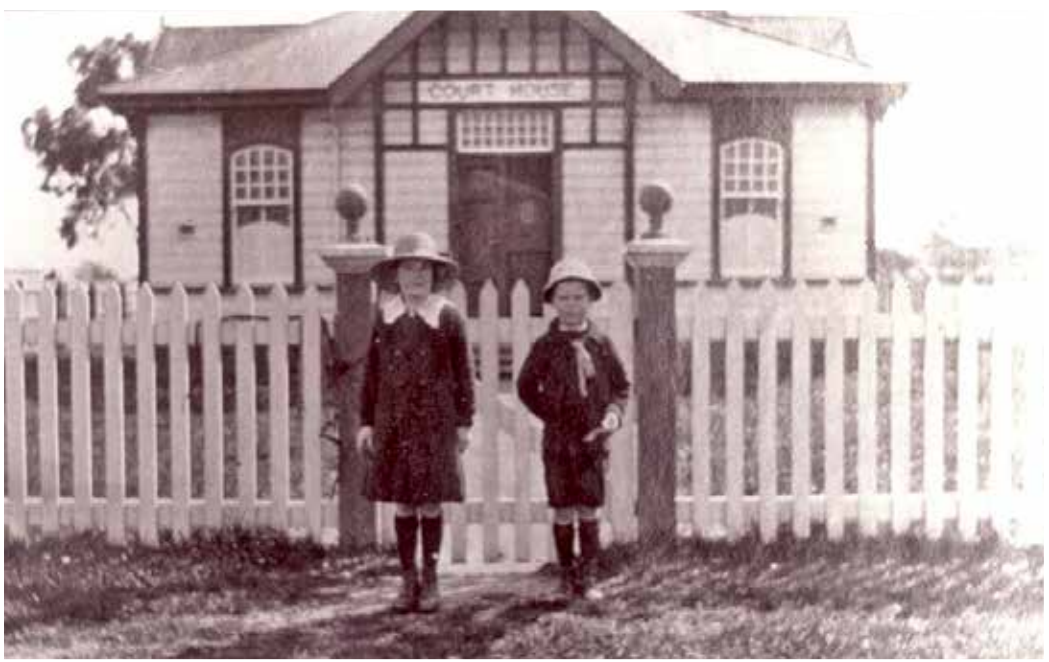
Licensed Real Estate Agent REAA 2008



HĪTŌRIA/History

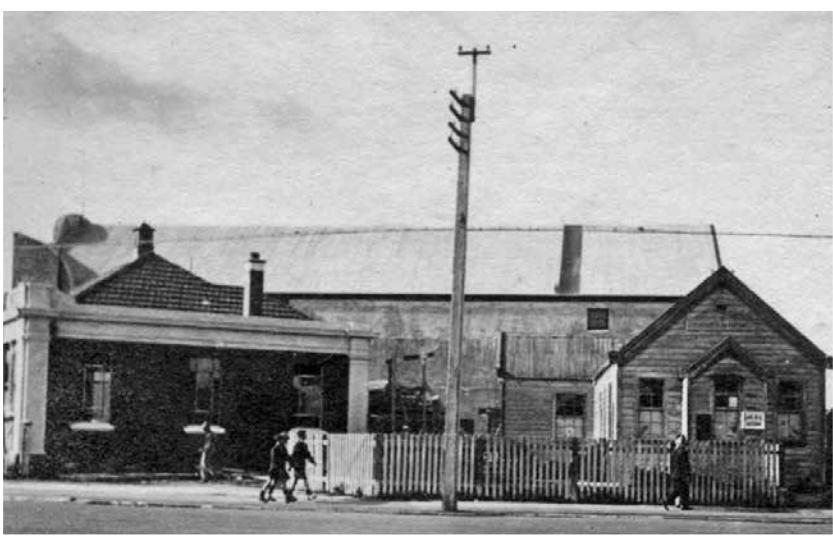
YE OLDE COURTHOUSES

Compiled by Debbi Carson



Colleen and Arnold Bagrie (aged 11), outside the Levin courthouse c1920. The courthouse was constructed in 1903.

Photo: Horowhenua Historical Society.



The old and new courthouse in Main Street, Foxton, and the Town Hall behind, c1930.

Photo: Foxton Historical Society.



The Foxton courthouse (above) was built in 1929. A previous wooden building, constructed in 1867 (top), was described as "the eyesore of the main street", prompting calls for its replacement. The building work was undertaken by T W Hunt of Foxton.

Historian Tony Hunt recorded in his history of Foxton that until 1948 the court heard civil and criminal cases, but after this date civil cases were heard elsewhere. The courthouse closed in 1971, and became the home of the Foxton Historical Society's museum collection. In 2013 the building was closed by Horowhenua District Council as it was deemed an earthquake risk. The historical society has been fundraising to undertake the required earthquake strengthening and reopen the building as a museum. It has compiled a business case for the development.



The Levin courthouse in 1969, when it had major renovations

Photo: Horowhenua Historical Society.



The historic Levin courthouse (seen above as it is today) was built in 1903. It was originally in Bristol Street, Levin. It has a floor area of 152sq m, and is constructed of matai and tōtara, weatherboard cladding and a corrugated iron roof. Major renovations undertaken in 1969 removed many of the original internal features. The exterior and floor layout remain largely original, with small modifications to the front entrance. In 2007, the Department of Corrections gifted the building to Horowhenua District Council, and following public consultation the courthouse was moved to its current site in the Nola Simpson Rose Gardens on Cambridge Street. Other renovations were carried out in 2009, including structural repairs, upgrading the interior, reinstating windows to their original position, and rebuilding the western wall and part of the ceiling. The surrounding green space was upgraded at the same time to complement the building, creating the Nola Simpson Rose Gardens. Various organisations and a coffee shop have been housed in this historic building. The Old Courthouse Eatery is now a part of its history.



THE HIMATANGI TRAGEDY
The Foxton courthouse was the location of the coroner's inquest into the notable "Himatangi Tragedy" in 1929, not long after the courthouse opened. Eight people died, including farmer Thomas Wright, his wife and three children. The tragedy was discovered after a fire at the Wright farmhouse on Paranui Road between Himatangi and Rangiotu. It was later found that Thomas had been shot in the back of the head with a shotgun. The death of Thomas was deemed to be murder but the case was never solved.

Team culture a winner for Foxton

By Paul Williams

So, what’s in the Foxton water?

It’s a question being asked after Foxton took both senior titles at Saturday’s club rugby finals in Levin.

Senior coach Tom Zimmerman says there’s a good team culture and plenty of healthy banter: “If you give it, you’ve got to be able to take it.”

But all jokes aside, the club has a culture big on whānau, involving partners, families and children. At after-match functions, wives, partners and children eat first.

“Rugby is always going to be there and family comes first and we’ve instilled that in our players,” Tom says. “I suppose if things aren’t happy at home we’re going to struggle and the last thing we want is anyone getting a tune-up.”

“We purposely make trainings short and sharp – one hour max.”

Foxton took the premier game by the scruff of the neck early by scoring four unanswered tries, scorching to a 24-0 lead before anyone had a chance to grab a hot dog.

Outside backs Arana Murphy, Connor Paki and Shaun Lawton-Sue, and halfback Tema Tihema, all scored tries early. Further tries were scored by man-of-the-match Kale Eriksson, Josh Sanson, Alby Hemopo and Kenny Hill. Foxton

become the first team to score more than 50 points since the finals format was introduced.

Rāhui tried to claw their way back into the game, but they were forced to play catch-up. Their tries were scored by Wirangi Parata, Tonohi Raureti, Morehu Connor-Phillips and Alizay Roach.

An understrength Rāhui were plagued with injuries leading into the final, but could offer no excuse. They played well and were brave in defeat, but were simply beaten by a better team on the day.

There were some highlights. Rāhui winger Alizay Roach, in scoring a try and kicking three conversions in the final, became his club’s leading point scorer ever at just 24 years old. Alizay has now scored 656 points in senior rugby for Rahui, surpassing the previous mark of 646 set by Dion Nepia.

In the earlier senior B match, a tight-head scrum at a pivotal moment swung momentum Foxton’s way. Rāhui were on attack at the time, and Foxton managed to score soon after to take a winning break. Otherwise, there was little between the two.

■ See ‘Results’ below for scorecard



Foxton flanker Alby Hemopo scoots over for a late try.
Photo Paul Williams

HK Heartland squad named

By Paul Williams

Loan players. Once upon a time they were a dirty word. Now you almost can’t live without them.

It wasn’t too long ago that Horowhenua-Kāpiti was the only Heartland province to resist enlisting outsiders – it was seen as a badge of honour, preferring to concentrate on home grown talent.

Times have changed. Other unions began using them to great effect and it became clear that to be competitive, you almost had to have them.

HK Heartland coach Aleni Feagaiga is expected to add the full complement of four loan players to the squad he announced at the weekend, ahead of the competition opener against Buller at Levin Domain on August 9.

Aleni says loan players are nothing to be afraid of. They can add value and in most cases experience and knowledge to the team.

“Every team has them. Every team utilises them. There are definite benefits, and you look to have them fit into the overall team culture and complement the way you want to play.”

Aleni says it made sense to work with neighbouring provincial unions like Manawatu and Wellington in identifying players that

are on the cusp of selection there, to provide representative opportunities for the right player who might have missed selection for that union.

“We’ll be looking at how we want to play and the type of position and player we need,” he says.

Meanwhile, the 2025 HK squad announced on Sunday has a good mix of youth and experience, and a naturally strong Foxton flavour given that team has been in great form and won the Horowhenua-Kāpiti club championship for the second year in succession.

Former Samoan international Kahn Fotuali’i is one of 10 players from Foxton – including veteran prop Dave McErlean – with the rest coming from Paraparaumu (5), Shannon (3), College Old Boys (3), Rāhui (2), Waikanae (2), Wanderers (2) clubs.

Uncapped players poised to get their first taste of Heartland rugby include Albert Hemopo, George Jacobs, Tema Tihema (Foxton), George To (Waikanae), Max Sanders, Jayson Aquila, Max Hosking (Paraparaumu) and Tala Fonoti (COB).

Aleni hasn’t settled on a captain yet, but one

of the leadership core within the squad should be getting a tap on the shoulder soon.

A wider squad had been training monthly and with the club season over the focus is now on rep rugby and the pre-season match against Wellington Māori at Playford Park on August 9.

HK Heartland squad
Forwards: Aaron Lahmert (Waikanae), Albert Hemopo* (Foxton), Brad Reilly (Paraparaumu), Dallas Wiki (Shannon), David McErlean (Foxton), George Jacobs* (Foxton), George To* (Waikanae), Jeremy David (Foxton), Joel Winterburn (Rāhui), Max Saunders* (Paraparaumu), Michael Laursen - (Foxton), Mikaere Harvey (Foxton), Stephen Burnell (Shannon), Tala Fonoti* (Levin COB), Ted Northcott (Rāhui). **Backs:** Chris Salu (Levin COB), Connor Paki (Foxton), Darren Falaniko (Wanderers), Jayson Aquila* (Paraparaumu), Joeli Rauca* (Foxton), Kahn Fotualii (Foxton), Malaki Masoe (Wanderers), Max Hosking* (Paraparaumu), Sean Pape (Shannon), Tema Tihema* (Foxton), Thomas Barnsley (Paraparaumu), Willie Paia’aua (Levin COB).

* Uncapped players.

Entrance tides August 1-8
<https://www.metservice.com/marine/regions/whanganui-manawatu/tides/locations/foxton>
<https://www.metservice.com/marine/regions/kapiti-wellington/tides/locations/waitarere-beach>
Please note: The actual timing of high and low tide might differ from that provided here. Times are extrapolated from the nearest primary port for this location, so please take care.

| MANAWATU RIVER FOXTON | | | | | |
|-----------------------|-------|-------|-------|-------|-------|
| | HIGH | LOW | HIGH | LOW | HIGH |
| FRI 1 AUG | 02:44 | 09:19 | 15:08 | 21:38 | - |
| SAT 2 AUG | 03:32 | 10:07 | 16:03 | 22:37 | - |
| SUN 3 AUG | 04:29 | 11:05 | 17:10 | 23:47 | - |
| MON 4 AUG | 05:34 | 12:14 | 18:24 | - | - |
| TUE 5 AUG | - | 01:00 | 06:43 | 13:25 | 19:31 |
| WED 6 AUG | - | 02:03 | 07:47 | 14:24 | 20:24 |
| THU 7 AUG | - | 02:53 | 08:40 | 15:12 | 21:08 |
| FRI 8 AUG | - | 03:37 | 09:26 | 15:54 | 21:46 |

| WAITARERE BEACH | | | | | |
|-----------------|-------|-------|-------|-------|-------|
| | HIGH | LOW | HIGH | LOW | HIGH |
| FRI 1 AUG | 01:59 | 08:17 | 14:23 | 20:36 | - |
| SAT 2 AUG | 02:47 | 09:05 | 15:18 | 21:35 | - |
| SUN 3 AUG | 03:44 | 10:03 | 16:25 | 22:45 | - |
| MON 4 AUG | 04:49 | 11:12 | 17:39 | 23:58 | - |
| TUE 5 AUG | 05:58 | 12:23 | 18:46 | - | - |
| WED 6 AUG | - | 01:01 | 07:02 | 13:22 | 19:39 |
| THU 7 AUG | - | 01:51 | 07:55 | 14:10 | 20:23 |
| FRI 8 AUG | - | 02:35 | 08:41 | 14:52 | 21:01 |

RESULTS & FIXTURES

RUGBY
FINALS, Saturday, Levin Domain
Ramsbotham Cup (Premiers)
Foxton 58, Rāhui 26.
Foxton: Tries to S Lawton-Sue (2), A Murphy, C Paki, J Sanson, K Eriksson, A Hemopo, K Hill. A Murphy 6 con, 2 pen.
Rāhui: Tries to W Parata, T Raureti, M Connor-Phillips, A Roach. A Roach 3 con.
Player of the match: Kale Eriksson, Foxton
Bill Muir Cup (Senior Reserve), 12.30pm
Foxton 35, Rāhui 19.
Foxton: Tries to M Vueti, M Pearce, R Kauri-Warner, S Visavisawaqa. R Kauri-Warner pen, 2 con, Kawiti Murphy 2 pen, con.
Rāhui: Tries to P Cook, C Vanderwiel, J Foxall. M Rikihana 2 con.
Player of the Match: Sunia Visavisawaqa, Foxton.

GOLF
Levin: (Week ending July 27)
Monday: Speldhurst 9 Hole Stableford – Mick Thomson 20, Wayne Nation 19, Steve Tristin 18. **Tuesday:** Men Net: David Pick 68, Kevin Campbell 72, Ivan Franklin 74. **Wednesday:** 9 Hole Mixed Stableford – Mavis Yee 21, Terry Jordan 20, Den Hutchins 19, Birdies: Helen Latham; Net: Carol Louisson 71, Margaret Hooper 73, Leanne Ward 74. Twos: Carol Louisson; **Thursday:** Early Men Stableford: Brian O'Donnell 38, Peter Clarke 34,

Rāhui's Joel Winterburn, who has been named in the the Heartland team (see above).
Photo Dave Lintott

Ivan Franklin 33; Late Men Net: Neville Simpson 70, Dene Buckingham 34, Gerald Harpur 34; **Friday:** 9 Hole Mixed Stableford 3 clubs and putter – David Douglas 19, Cecily Archer 19, Mavis Yee 19. Birdies: Cecily Archer; Speldhurst 9 Hole Stableford: Steve Tristin 20, Neville McRae 19, Tom Royden 18. **Saturday:** Early Men Stableford – Soon Song 37, Robert Corkill 35, Ian Morby 35; Ladies Net: Ani Lochore 69, Leanne Ward 72, Clare Sorensen 76; Late Men Irish Stableford: Phil Beale 74, Pete Greig 69, Gerald Harpur 66.

COLLING & GRAY
PANELBEATERS
SPRAYPAINTERS
LEVIN

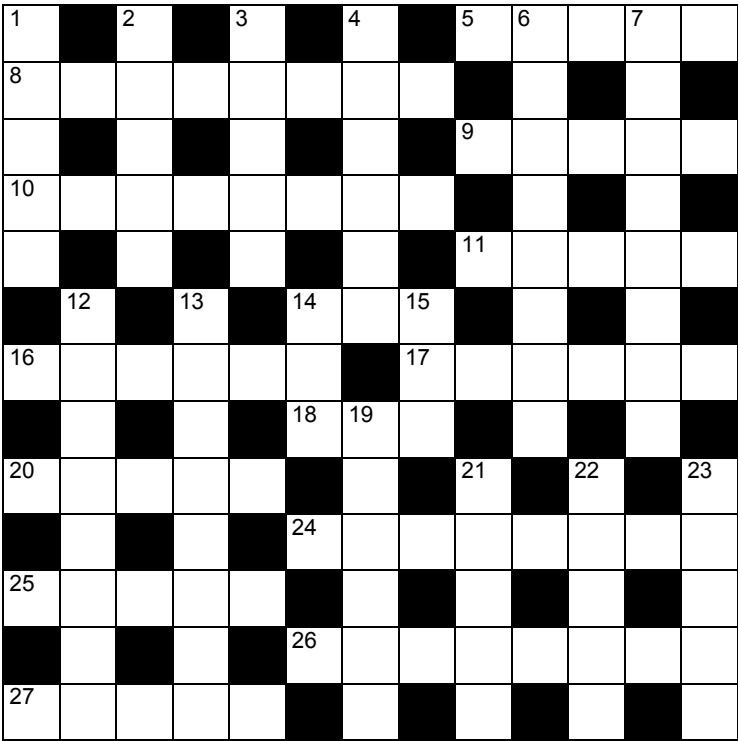
Approved Structural Collision Repair Specialist

NO REPAIR TOO SMALL

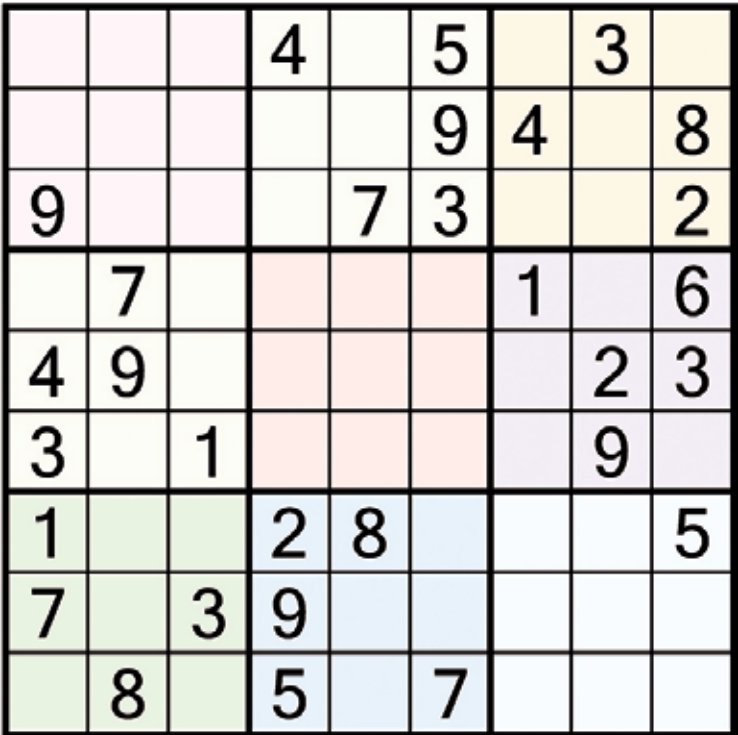
SPECIALISING IN: • All Vehicle Insurance Claims
• Plastic Welding • Accident Damage • Rust Repairs
• Motorbike Repairs • Vehicle Restoration Work
• Relief Vehicles Available

22 Liverpool Street, LEVIN
368 4722
collingandgray@xtra.co.nz • panelbeaterslevin.co.nz

THE CROSSWORD #NZ1946B (answers below right)



SUDOKU PUZZLES thepuzzlecompany.co.nz
MEDIUM #89M Use logic and process of elimination to fill in the blank cells using the numbers 1 through 9. Each number can appear only once in each row, column and 3x3 block.



CROSSWORD #1946B ANSWERS
Across: 5. Catty, 8. Nadia Lim, 9. Timid, 10. Galloway, 11. Smoko, 14. Add, 16. Fabric, 17. Israel, 18. Con, 20. Clout, 24. Manawatū, 25. Again, 26. Agitated, 27. Stone. **Down:** 1. Snags, 2. Oddly, 3. Havoc, 4. Wizard, 6. Ātiamuri, 7. Thickset, 12. Fanlight, 13. Art Union, 14. ACC, 15. Din, 19. Orange, 21. Salty, 22. Hasty, 23. Ruddy.

- ACROSS
5. Spiteful (5)
8. Winner of MasterChef New Zealand in 2011 (5,3)
9. Shy (5)
10. Cattle breed introduced to New Zealand from Scotland (8)
11. Tea break (colloq) (5)
14. Sum up (3)
16. Material (6)
17. First name of UFC fighter Adesanya and former All Black Dagg (6)
18. Point against (3)
20. Influence (5)
24. River which flows into the Tasman at Foxton Beach (8)
25. Once more (5)
26. Worked up (8)
27. Pebble (5)
- DOWN
1. Sausages (colloq) (5)
2. Peculiarly (5)
3. Mayhem (5)
4. Former Christchurch identity in Cathedral Square, The ____ (6)
6. Former hydro village 27km south of Tokoroa (8)
7. Solidly built (8)
12. Small window, usually at the top of the frame (8)
13. Forerunner to Golden Kiwi and Lotto (3,5)
14. Government department (abbr) (3)
15. Racket (3)
19. A colour, and a fruit (6)
21. Briny (5)
22. Rushed (5)
23. Florid (5)

NZ CRIME QUIZ

Answers page 19-

- What is the most common crime in New Zealand?
- What year did Parker and Hulme, two Christchurch teenagers, commit murder? a. 1924 b. 1949 c. 1950 d. 1954
- What is the title of Greg Newbold’s book about his five years in New Zealand prisons? (Greg Newbold later became a Criminology Professor at the University of Canterbury). a. Mr Nice b. Hard Time c. Doing Time d. The Big Huey.
- Name 3 of the top 10 most dangerous countries in the world.
- And three of the safest countries in the world*?
- Which are the five countries where police officers do not carry guns?
- What does the legal concept “At the Policeman’s Elbow” mean?
- What was the name of the gangs that terrorized New Zealand in the 1970s?
- Who was the only woman to be executed in New Zealand?
- Who was wrongly convicted of murdering his neighbors, the Crewes, and spent nine years in prison before being pardoned?
- In 1909 a notorious confidence trickster – in the guise of Percy Redwood – married Agnes Ottaway for her money. At her avidly followed trial, Redwood admitted to masquerading as a man, forgery, false pretences and theft. She received a two-year prison sentence. What was her name?
- On 6 September 1929 a farmhouse near Himatangi, burned to the ground, with four adults and four children perishing inside. What is this known as?

WORD SEARCH

answers page 19

| | | | | | | | | | | | | | |
|---|---|---|---|---|---|---|---|---|---|---|---|---|---|
| S | D | R | A | D | N | A | T | S | H | E | M | L | A |
| R | O | G | E | T | E | S | A | S | I | C | K | S | D |
| E | F | D | E | T | T | E | T | S | E | C | U | R | E |
| M | F | A | T | T | P | T | S | O | F | H | U | S | B |
| O | E | M | D | E | N | S | D | T | N | S | T | H | I |
| S | N | A | O | R | I | I | R | N | R | N | I | N | L |
| H | S | G | E | S | O | E | A | H | A | O | S | R | I |
| T | I | E | E | U | L | O | A | R | U | O | N | E | T |
| A | V | D | S | I | F | E | E | B | L | E | C | G | A |
| O | E | O | A | E | F | L | D | U | M | W | F | R | T |
| L | O | B | F | C | O | T | R | F | E | B | N | I | E |
| I | L | U | N | T | H | R | E | A | T | E | N | E | D |
| E | D | P | A | I | B | E | K | N | T | K | T | E | U |
| M | R | I | F | N | I | P | A | T | H | E | T | I | C |

WEAK
PATHETIC
FEEBLE
OFFENSIVE
ODIOUS
DEBILITATED

LOATHSOME
INFIRM
SICK
DAMAGED
UNTHREATENED
STRONG

RELIABLE
STANDARDS
TOLERANT
SECURE

Why advertise with The Horowhenua Star?

- ★ The best distribution – 15,000 papers delivered every week, including 2500 in Foxton.
- ★ A paper readable online, plus the big stories of the week on the website.
- ★ The best journalists in the region, with three current or former editors on the staff. That means the best stories, written accurately and fairly.
- ★ The best reproduction on enhanced newsprint, so images are crisp.
- ★ The best layout with one of the country’s top news page designers on the team.
- ★ A team that builds relationships with advertisers to get the best results.

horowhenuastar.com

Talk to Pip: 027 809 4201, sales@horowhenuastar.com or Debbi: 027 285 4720 debbi@idmedia.co.nz

public notices



We are.
LGNZ.

A total of 71 submissions were received on Proposed Plan Change 6A.

SUMMARY OF SUBMISSIONS

Public notice is hereby given in accordance with Clause 7 of the First Schedule of the Resource Management Act 1991 that the Horowhenua District Council has prepared a summary of all decisions requested by persons making submissions on Proposed Plan Change 6. The Summary of Submissions report and the full copies of the original submissions are available to view from 1 August 2025 on Council's website and at the following locations during opening hours:

- Horowhenua District Council office: 126 Oxford Street, Levin. Hours: 8:30am to 5pm on Monday, Tuesday, Thursday and Friday, 9:30am to 5pm Wednesday.
- Te Takeretanga o Kura-hau-pō: 10 Bath Street, Levin. Hours: 9am to 5:30pm on Monday, Tuesday, Thursday and Friday, 10am to 9pm on Wednesday, 10am to 3pm on Saturday.
- Te Awahou Nieuwe Stroom: 92 Main Street, Foxton. Hours: 10am to 4pm Monday to Friday, 10am to 4pm Saturday and Sunday.
- Shannon Library: Plimmer Terrace, Shannon. Hours: 1pm to 5pm Monday to Friday, 10am to 12noon first Saturday of the month only.

FURTHER SUBMISSIONS

Council is now calling for further submissions in support of, or in opposition to, the submissions that have been received on Proposed Plan Change 6A. A further submission is made either in support of, or opposition to, another person's submission. They must be limited to the matters that were raised in submissions. It gives you the chance to consider the impact an original submission may have on you, and to have your views considered alongside the original submission.

The following people/groups can make a further submission:

- any person representing a relevant aspect of the public interest
- any person who has an interest in the Proposed Plan Change that is greater than the interest that the general public has
- Horowhenua District Council itself.

A further submission can only support or oppose submissions that have already been made and provide the rationale for that support or opposition. A further submission cannot introduce additional matters not covered in the original submission.

Any further submission must clearly state the number of the original submission to which the further submission relates. Please refer to the summary table within the summary of submissions report on Council's website which outlines the relevant specific point reference (for example 1.1).

Further submissions must be made in writing in the form prescribed (Form 6) in the Resource Management (Forms, Fees and Procedure) Regulations 2003. Further submission forms are available from any of the locations referred to above or can be downloaded from www.letskorero.horowhenua.govt.nz/PPC6A.

IMPORTANT: Any person making a further submission to Proposed Plan Change 6A must send a copy of their further submission on the person who made the original submission within five (5) working days of lodging their further submission with the Council. The address for service for each submitter is included in the summary of submissions report.

The period for making a further submission is 1 August 2025 until 14 August 2025 at 4pm.

Further submissions can be:

- delivered to: Horowhenua District Council, 126 Oxford Street, Levin
- posted to: Strategic Planning, Horowhenua District Council, Private Bag 4002, Levin 5540
- emailed to: districtplan@horowhenua.govt.nz
- made online on www.letskorero.horowhenua.govt.nz/PPC6A

06 366 0999 (24 hours)

126 Oxford Street, Levin 5510 • Private Bag 4002, Levin 5540
horowhenua.govt.nz • enquiries@horowhenua.govt.nz

funeral directors



All of us grieve in different ways, even if we experience a similar loss, our feelings may be very different to someone else's. Grief is a process that we don't get over – we work through, and sometimes you may need help. Many emotions are felt during this time and can be a tremendous challenge to all of those involved.

If you need to talk with someone, please contact us as we can help with referrals to appropriate agencies for bereavement support and help or provide you with some literature.



For more information please contact I.C.Mark Ltd. (06) 3688108
545 - 547 Queen Street East, Levin



community

REPAIR CAFE
LEVIN

August 9, 10am-1pm

Every second
Saturday of the month

Senior Citizens Hall
cnr Cambridge and
Montgomery St, Levin

Bring a copy of this
advert to the next
Repair Café and get
a free coffee or tea.

Interested in joining
the volunteer team,
as a repairer, host,
organiser,
administrator
or team leader?

Contact
Vic 021 311 686 or
Judy 027 271 7192

cars

THAT CAR GUY

MATT

Buyer of all vehicles

Cars 4x4s

Vans Trucks

Utes

020 4057 2087

plumbers



FREE
QUOTES

PLUMBING

Maintenance
Renovations
New Homes
Light Commercial

GAS FITTING

Servicing of all appliances
New installations
Heaters, cookers
Water heating

Shane 027 282 1048 • Alex 027 345 6014
[e: heplumbingandgas@gmail.com](mailto:heplumbingandgas@gmail.com)

stock auctions



WEDNESDAY
SALE

Levin Showgrounds
Tiro Tiro Road
entrance

10.30am
Calves

11am
Prime sheep
Store lambs
Ewes
Weaners
Yearlings
2 yr old cattle

Contact

David Haworth
027 450 4133
06 368 2642

pest control



UNWANTED ANTS
ARE OUR SPECIALTY!

Our treatments are guaranteed odourless and stain free. We also have solutions to control wasps, flies, spiders, cockroaches, mosquitoes, silverfish, moths, plus rats and mice.

PROTEKT PEST CONTROL

phone PAUL 06 364 5759 or 027 448 3910
or Wellington 04 472 9948

to let

TO LET/RENTAL
1 bdm s/c flat. Close
to town. Good sized
rooms. Bond & ref
required. Phone: 027
715 5262.

RUN ON CLASSIFIEDS

.75c + GST per word.
Ask about our
discounts for
non-profit
organisations.

DEATH
NOTICES
remember
your
loved
one
e: debbi@idmedia.co.nz
or txt
027 285 4720



RUNNING FOR
COUNCIL?



If you have made the big decision to run for a role at Horowhenua District Council, then make sure residents know. Advertise any time from now until the election, which is on October 11.

Horowhenua Star will get your messages in front of more readers than any other medium in Horowhenua – plus we can add radio and digital media. The Star is a newspaper with a trusted reputation for integrity.

It's the place to advertise.

For advertising enquiries, contact Pip: 027 809 4201 or
sales@horowhenuastar.com

For information about standing for council, see the Pre-election Report:
Search 'Pre-election Report' at horowhenua.govt.nz

See us online at: horowhenuastar.com

QUIZ ANSWERS FROM PAGE 18: 1. Fraud. 2. d. 1954. 3. a. Mr Nice. 4. Venezuela, Papua New Guinea, Haiti, Afghanistan, South Africa, Honduras, Trinidad and Tobago, Syria, Jamaica, Peru. (*rated by Numbeo. 5. Andorra (84.7); United Arab Emirates (84.5); Qatar (84.2); Taiwan (82.9); Oman (81.7); Isle Of Man (79.0); Hong Kong (China) (78.5); Armenia (77.9); Singapore (77.4); Japan (77.1). 6. Britain, Ireland, Norway, Iceland, and New Zealand. 7. Generally, in older times it meant that the defendant was so driven by his mental illness that he would've committed his crime even if he was standing right next to a cop. It's a weak defense these days. . 8. In the 1970s, two rival gangs, the Mongrel Mob and Black Power, terrorized New Zealand. The Mongrel Mob, initially a Pākehā (New Zealander of European descent) gang from Wellington and Hawke's Bay, became known for their violence and spread throughout the country. Black Power, formed in response to the Mongrel Mob and white power gangs, also expanded rapidly. 9. In 1895, Minnie Dean was convicted of murdering a baby and remains the only woman to be executed in New Zealand. 10. Arthur Allan Thomas. 11. Amy Bock 12. Hīmatangi tragedy.

SUDOKU
SOLUTION
#89M
FROM
PAGE 18

| | | | | | | | | |
|---|---|---|---|---|---|---|---|---|
| 8 | 1 | 2 | 4 | 6 | 5 | 7 | 3 | 9 |
| 6 | 3 | 7 | 1 | 2 | 9 | 4 | 5 | 8 |
| 9 | 4 | 5 | 8 | 7 | 3 | 6 | 1 | 2 |
| 5 | 7 | 8 | 3 | 9 | 2 | 1 | 4 | 6 |
| 4 | 9 | 6 | 7 | 5 | 1 | 8 | 2 | 3 |
| 3 | 2 | 1 | 6 | 4 | 8 | 5 | 9 | 7 |
| 1 | 6 | 9 | 2 | 8 | 4 | 3 | 7 | 5 |
| 7 | 5 | 3 | 9 | 1 | 6 | 2 | 8 | 4 |
| 2 | 8 | 4 | 5 | 3 | 7 | 9 | 6 | 1 |



McCown Pumps

022 587 5450

Farm, House, Bore, Septic,
Irrigators, Pulsators, Maintenance,
Replacement

ALL ENQUIRIES, PLEASE CALL
DAN 022 587 5450

6 Roslyn Road, Levin • danielmccown01@gmail.com

Callum Pearson
Registered Electrician

CPRE

- rewires
- new builds
- switchboard upgrades
- additions / alterations
- lighting upgrades
- heatpump installation & service
- TV Data install & service
- EV charging
- CCTV & alarms
- Smart Home & IoT

callum@cpre.nz | 027 695 8925

Jayden Moore
Owner
Funeral Director
Embalmer

Marina Bennett
Owner
Funeral Director
Embalmer

Brooke Burns
Funeral Day Technician
Social Media

Leo
Grief Support

Te Awahou Funeral Services, cnr Purcell St & SH 1, Foxton • 06 363 7404 • teawahoufunerals.co.nz

HOROWHENUA FREEMASONS

Are you
interested?

PHONE
021 0835 5308





WEEKLY FROM \$147

ONLY \$27,995

2022 SUZUKI S-CROSS JLX 2WD 1.4PT/6AT

NZ new, 1 private owner, sold and serviced by us from new, only 50,300km, alloys, roof rails, towbar, window tints, sat nav, rev camera / sensors, Bluetooth/USB, FCW, LDW, keyless entry/start/stop, heated front seats, climate a/c, adaptive cruise cont, factory warranty balance.



WEEKLY FROM \$320

ONLY \$61,995

2025 ISUZU D-MAX X-RIDER 3DT/4WD/6AT

NZ new, ex-demo, only 3,790km, Black alloys, sports bar, tonneau cover, window monsoons, select 4WD with hi-lo, diff lock, auto headlights, Bluetooth, cruise cont, BSM, DBC, rev camera/sensors, service books, factory warranty balance.



WEEKLY FROM \$280

ONLY \$53,995

2024 MITSUBISHI PAJERO SPORT VRX 2.4DT/4WD/8AT

NZ new, only 15,800km, towbar, alloys, running boards, rear spoiler, window tints, roof rails, bonnet guard, electric tailgate, adaptive cruise cont, surround view/rev camera, Bluetooth/USB, 7-seater in leather, heated front seats, paddle shift, DRLs/FCW/DBC, climate a/c, keyless entry/start/stop, factory warranty balance.



WEEKLY FROM \$185

2024 SUZUKI VITARA SAFARI JLX 1.4PT/HYBRID/6AT

NZ new, ex-demo, only 2,860km, alloys, window tints, roof rails, roof racks, bonnet guard, FCA, LDW, DRLs, DSC, paddle shift cont, adaptive cruise cont, climate a/c, immobiliser, Bluetooth/USB, rev camera/sensors, keyless entry/start/stop, service history/books, factory warranty balance & ORC included.

NOW ONLY \$35,995

WINTER SPECIAL SAVE \$\$\$!

2019 SUZUKI VITARA JLX 1.4PT/2WD/6AT

NZ new, 1 private owner, sold & serviced by HMC from new, only 77,350km, alloys, roof rails, window tints, rev cam/sensors, climate a/c, cruise cont, Bluetooth/USB, sat nav, immobiliser, FCW/LCW, auto headlights, keyless entry/start/stop, service books.

ONLY \$19,995

WEEKLY FROM \$105



WORKSHOP NOW OPEN SATURDAYS!
HOURS: MON-FRI: 7:30AM-5PM
SAT: 8AM-12PM

GET A WOF INSPECTION JUST \$75!

Get Ready for Winter! Ask Us About Our FREE Battery Test to Keep You Moving!

MORE INFORMATION

0800 744 111

HMC LEVIN
15-19 Bristol Street, Levin

2018 SUZUKI GRAND VITARA 2.4P/4WD/5MT

NZ new, sold new by HMC 2018, 1 owner, only 11,000km, 5speed manual, select hi-lo ratio 4WD, alloys, black graphics, roof rails, roof racks, rev cam, CD stereo, Bluetooth, cruise cont, climate a/c, immobiliser, service books, 2 keys.



ONLY \$19,995 WEEKLY FROM \$105

2016 HOLDEN BARINA CD 1.6P/6AT

NZ new, only 85,170km, alloys, auto headlights, CD stereo, Bluetooth, central locking, abs, a/c, immobiliser, cruise cont, traction cont, multi-function steering wheel.



ONLY \$11,995 WEEKLY FROM \$65

2001 SUBARU IMPREZA WRX

Import, only 191,120km, gold alloys, window tints, electric windows/mirrors, Bluetooth/USB stereo, central locking, STI hood, roof rack, brace/bonnet scoop/rear wing, stainless performance exhaust, cambelt replaced at 163,000km.



ONLY \$18,995 WEEKLY FROM \$100

2007 MAZDA MPV 2.3P/AT

Import, only 174,800km, alloys, window tints, roof rails, CD stereo, Bluetooth /USB, rev camera, keyless entry, 2 keys, immobiliser, 7-seater.



ONLY \$7,995 WEEKLY FROM \$45

2007 HOLDEN COMMODORE SS V8 6.0P/AT

NZ new, 190,500km, 20" black alloys, rear spoiler, towbar, window tints/monsoons, CD stereo, cruise cont, traction cont, abs, a/c, immobiliser, keyless entry.



ONLY \$21,995 WEEKLY FROM \$115

2014 SUZUKI SWIFT GLX 1.4P/4AT

NZ new, 179,920km, cruise cont, Bluetooth, CD stereo, airbags, steering wheel controls, immobiliser, keyless entry, a/c, ideal student/first car/



ONLY \$6,995 WEEKLY FROM \$50

Got a used car taking up driveway space?
Need some extra cash?

WANTED!!
USED CARS WANTED

HMC Levin are buying used cars now.

Free appraisal on your used vehicle prior to purchase.

Terms & Conditions apply.



360 Oxford Street, Levin

Julian 027 216 7989

P: 0800 744111

W: hmclevin.co.nz

WHERE JOURNEYS BEGIN

Talk to us today about finance options

- Best value new and used vehicles
- Comprehensive repair and maintenance options
- Practical pick up and drop off service
- Guaranteed genuine parts and accessories